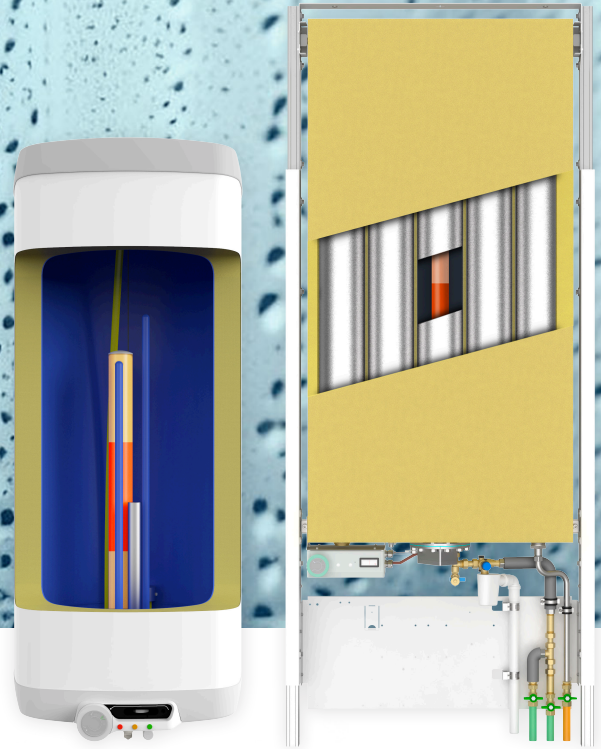


## NORD EcoBoiler

Stratified storage for the effective preparation of hot water with photovoltaics



EcoBoiler with patented heating technology ▶



### LAYERED STORAGE WITH OPTIMISED AREAS AND COMFORT ZONE

An optimised division of the storage zones always keeps enough hot water available and still effectively uses your photovoltaic system.



### DIVIDED HEATING ZONES ALLOW SMALL CHARGING POWERS OF THE HEATING ELEMENTS

By segmenting the storage content, a reduction in charging power is achieved without having to compromise on availability



### OPTIMAL USE OF PHOTOVOLTAICS EVEN ON LESS SUNNY DAYS

Low charging powers allow you to use your photovoltaics effectively without having to draw additional energy from the grid and that also in the transitional months.



### EFFICIENCY OF UP TO 70%

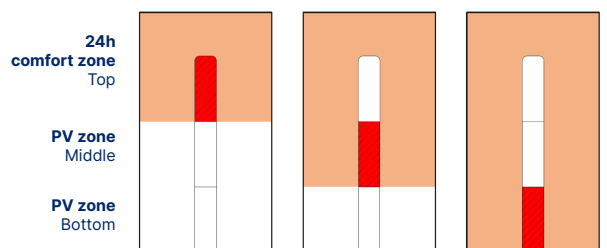
In pure operation with a 1.5 kWp photovoltaic system, a self-sufficiency of over 70% of the energy demand is possible.



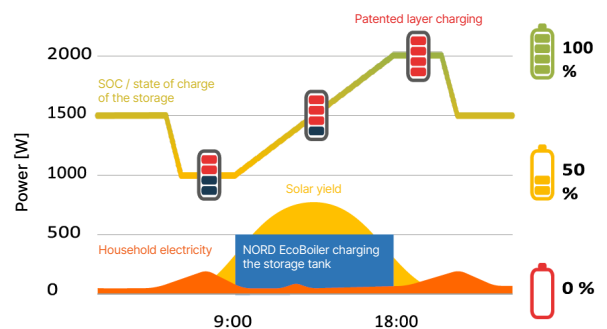
### WALL-MOUNTED VARIANT WITH LOW INSTALLATION DEPTH AVAILABLE

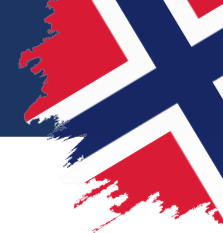
Available for invisible and therefore very aesthetic use in partition walls with an installation depth of 250 mm.

### NORD EcoBoiler the 3-zone hot water preparation



### NORD EcoBoiler - Daily cycle





## TECHNICAL DATA

NORD EcoBoiler	160	140 FLAT	140 FLAT+
Storage material	Steel, enamelled, with protective anode	Stainless steel 1.4571 (V4A), dip-pickled	Stainless steel 1.4571 (V4A), dip-pickled
Storage capacity (litres)	152	140	140
Dimensions H x W x D (mm)	1235×520×550	1750×920×200	1750×920×250
Max. perm. operating pressure (bar)	6	6	6
Cold water pressure (bar)	9	9	9
Max. operating temperature (°C)	90	95	95
Weight (kg)	51	80	85
Storage insulation	Pressure-foamed PU rigid foam, CFC-free	Pressure-foamed PU rigid foam, CFC-free	Pressure-foamed PU rigid foam, CFC-free
Load profile	M	M	M
Energy label incl. PV	A (1,5kWp, 1,2kWp), C (0,9kWp, 0,6kWp)	B (1,5kWp, 1,2kWp), C (0,9kWp, 0,6kWp)	B (1,5kWp, 1,2kWp), C (0,9kWp, 0,6kWp)

### INSERT

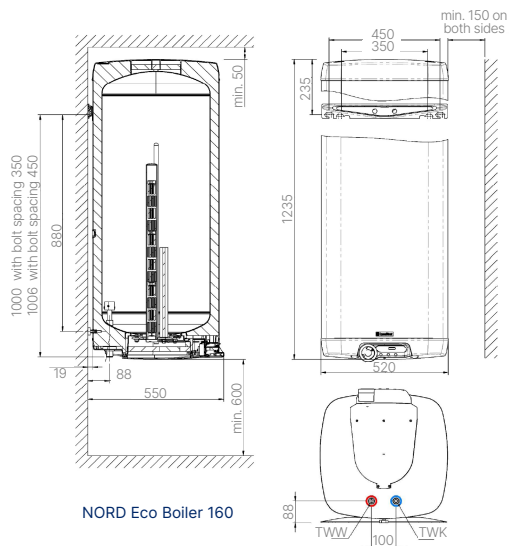
Revision flange	Diameter inside 150 mm	Stainless steel, diameter inside 150 mm
Display elements	Different coloured signal lamps for all heating zones, thermometer (analogue)	Different coloured signal lamps for all heating zones
Electric heating element	Patented electric heating element, 3-stage (EcoBoiler 160) / 2-stage (EcoBoiler 140 Flat / 140 Flat+), 24h comfort zone on top: 1000 W, PV zone middle and bottom: 500 W each installed in a hull tube welded to the flange cover. Incl. thermostatic control with layer charging and all-pole safety temperature limiter (95%) as well as integrated control relay (230 V, 1~) for the PV zone.	
Operating elements	Operation via panel on the front: Continuous temperature control of the 24h comfort range with energy-saving setting and frost protection setting.	

### CONNECTIONS

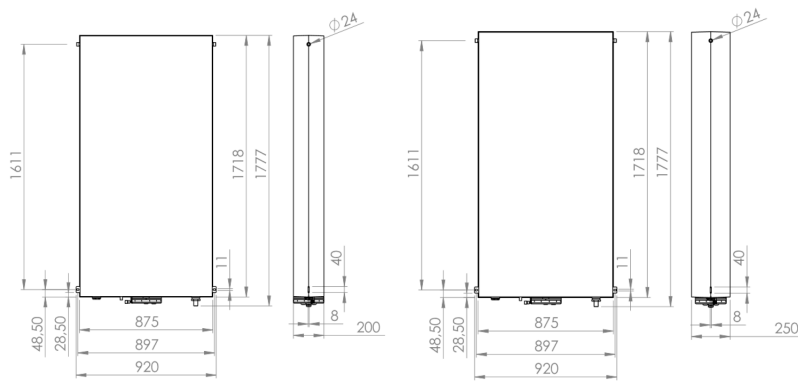
Cold water	DN20 - 3/4"AG male thread	DN20 - 3/4"AG male thread
Hot water	DN20 - 3/4"AG male thread	3/4"AG male thread (plastic sampling pipe inside)
Earthing	M8 thread	Via connection cable or ring cable lug up to max. 10 mm <sup>2</sup>
Electrical connection	Terminal area for power supply 230 V, 1~, max. 2kW; terminal area for release PV zone 230 V, 1~, (internal relay)	

### AVAILABLE ACCESSORIES

Extra	Suspended storage tank connection set incl. safety group	Universal frame, inspection door Various hydraulic modules (sanitary connections)
-------	--	---



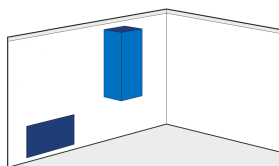
NORD Eco Boiler 160



NORD EcoBoiler 140 Flat

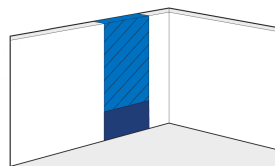
NORD EcoBoiler 140 Flat+

### NORD EcoBoiler INSTALLATION



Suspended storage tank with hydraulic module

NORD EcoBoiler 160



Intermediate wall storage with hydraulic module

NORD EcoBoiler 140 Flat | 140 Flat+